



CAPABILITY STATEMENT



Crew Transfer

Commercial charter for offshore research

Offshore servicing & providing services

Hydrographic surveys

High speed response

Diving support

ROV & drop camera

Navy Support & Logistics
(International Navy's visiting Australia & the Region)

Environmental sensitive reef area & near shore survey

Hotshots

Harbour services

Seabed Levelling & Sweeping

Wrack Removal

Amphibious marine crafts
– multirole, all terrain, launch & land

Standby Search and Rescue

CONTENTS

Background	2
QMS Today	3
QMS Operational Services	3
Objectives and Services	4
Why Use Quest	4
Capabilities & Accreditations	5
Major Clients	5
History and Key Personnel	6
Contact	7

BACKGROUND

Quest Maritime Services (QMS) was established in Western Australia in 1997, as a provider of Support Vessels to the Oil and Gas industry. Through our years of combined experience, we have been able to offer highly skilled, qualified personnel to provide safe, efficient, and effective outcomes in our ability to cater to our client's specific requirements.

Over time we have diversified into International Navy Support and Logistics, including water taxi services, harbour maintenance and diver support, as well as Inner Harbour services.

We have recently conducted Sweeping / bed levelling and Wrack Trawl campaigns for The Department of Defence, Department of Transport and Ports along the Western Australian coastline with great success.

To service our growing customer base, we established facilities around the Australian coast, extending our service area from Perth to Darwin and Brisbane.

QMS takes pride in our ability to cater to all our client's specific requirements, while maintaining a strong focus on WHS disciplines and procedures, which are paramount to this company's principles.

"To be recognised as a leading provider of charter vessels for specialised marine contract work, which is managed and operated in a safe, effective manner, with high regard for the welfare of crew, clients and the environment."



QMS TODAY

One Business Two Solutions

The evolution of QMS and its relationship with clients has seen the development and expansion of the QMS Naval division.

QMS Services

Quest Maritime Services strives to be the number one provider of charter vessels for specialised marine contract work.

We provide services to the Oil & Gas, Navy, and other commercial sectors.

Seabed Levelling and Sweeping

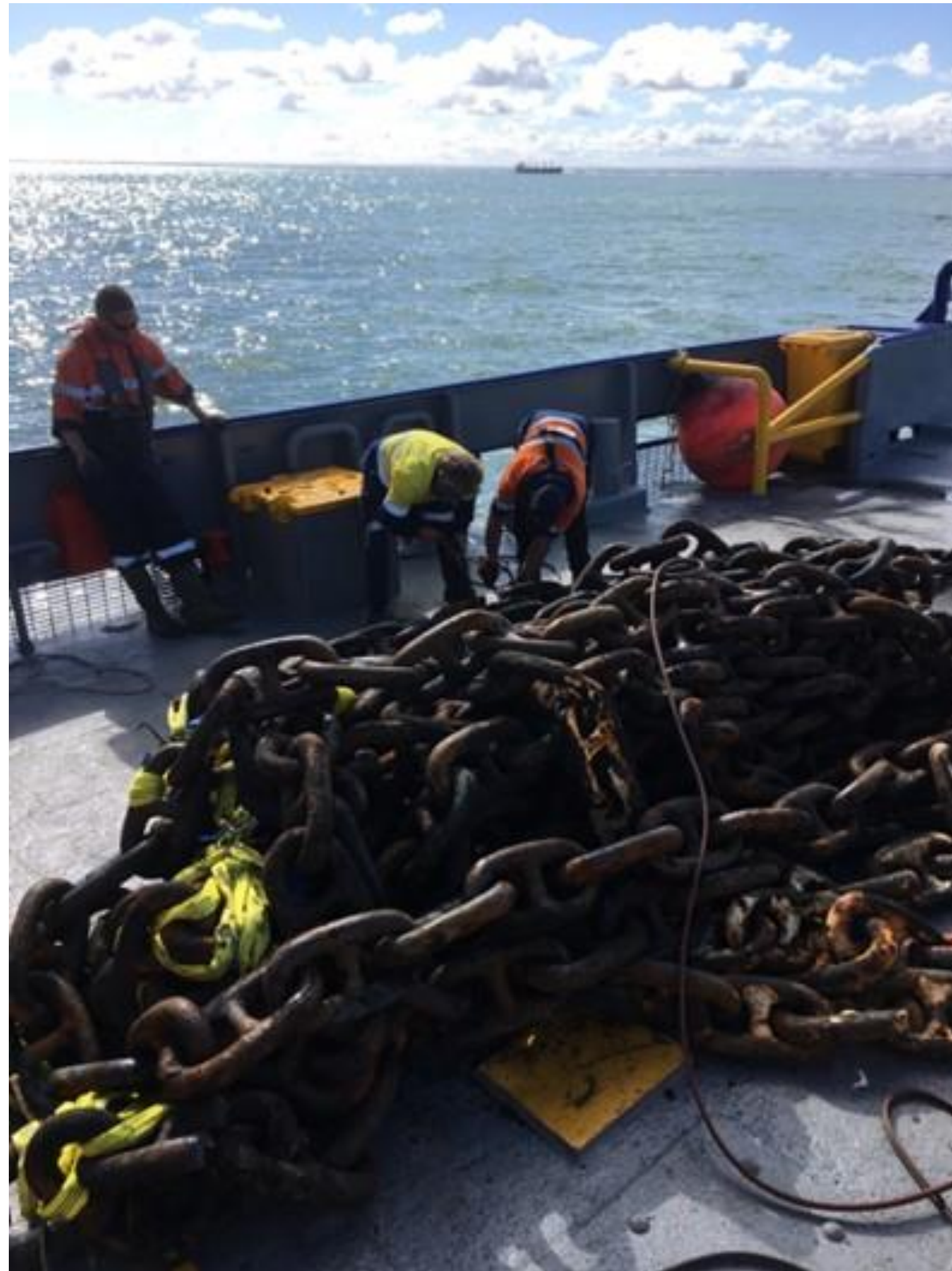
More recently we have conducted some highly successful seabed levelling campaigns at Garden Island, for the Department of Defence, as well as the Department of Transport and ports located along the Western Australian coastline.

The Plough Spread is a purpose-built bed leveller, engineered and manufactured for sea profiling and is utilised to redistribute built up material on the sea floor, offering a low cost environmentally friendly alternative for deepening and widening shipping channels and removing and levelling silt, sand deposits in berth pockets. Levelling post dredge spoil mounds and supporting dredging vessels.

The combination of our versatile and experienced crew, vessels, and equipment with a team of the best Marine Scientists and Hydrographic Surveyors, has resulted in a number of successful seabed levelling and sweeping campaigns.

Our vessels are routinely serviced, cleaned, and maintained, to ensure that they are managed and operated in a safe and effective manner, with a high regard for the welfare of crew, clients and the environment.

Quest Maritime Services provides a wide range of operational services to keep the marine industry moving.



QMS OPERATIONAL SERVICES

Keeping your business moving

With access to a diverse range of Vessels, QMS has proven success in the supply of services to a wide range of industries.

Industries Served

Oil & Gas
International Navy
Harbour Maintenance and Dive operations
Inner harbour services
Environmental Research

- Commercial charter for offshore research
- Offshore servicing of marine facilities and vessels
- Crew Transfer, Hot Shots, Supply, Support and Standby Vessels
- Hydrographic surveys
- High speed emergency response
- Diving operations, contracted for Ashmore Reef Border Force moorings annually.
- ROV & drop camera
- Environmental sensitive reef areas & near shore surveys & Research.
- Amphibious marine crafts – multi-role, all terrain, launch and land crew transfer Tender
- Line Boats and Pilot work
- Coastal Towing Services
- Sweeping/bed levelling Operations
- Wrack trawling
- International support vessels (Near Australian Region)
- Wharf/jetty maintenance (pile wrapping, pontoon deployment, rescue vessel standby)
- Jack up barge movements/assistant
- International Navy support during Australian based navy exercises, providing logistical, vessel and land-based support.
- Towing
- Offshore Delivery

QMS MARINE SERVICES

Our Services

Our Objectives

- On time service, fast safe service.
- Provide a service with the lowest Environmental impact as possible.
- Provide an economical service with no surprises.
- Improve your business's efficiency and productivity by using an experienced crew and well-maintained vessels.
- Effective communication with the client on and off site with personalised service.
- Aim to provide top customer satisfaction.

- Effective Navy Support in all aspects of the work scope.
- Audited and compliant Management System's policies, procedures and manuals followed at all times on the job.
- Complete Vessel Safety Management Systems
- Effective and rapid response to all Oil & Gas 'Hot Shot' jobs to deliver ahead of time and on budget.
- Professional and competent crew to have safety and environment on the top of the agenda.
- Professional and safe dive practices.
- Hazard and Risk Analysis
- Bed Levelling of the highest standard, added with A1 or IHO special order survey available at request.
- Safety Inspections and Program's

Management services for certification and compliance

- Quality Management System ISO 9001:2015
- Environmental Management System ISO 14001:2015
- Occupational Health and Safety Management System ISO 45001:2018

Quest is an Equal Opportunity employer

WHY USE QMS

Experience

We have been operating for over 20 years providing quality maritime services whilst maintaining a zero-incident target rate.

Credibility

QMS is accredited with the major Oil & Gas companies operating in the area. Provision of regular services to our Navy and Australian Border Force services. A reputation of successfully delivering complex marine and technical operations for the US & Canadian Naval vessels. Successful and within budget Bed Levelling/Dredging works, ensuring safe passages for shipping. Extensive client base.

Customer Service

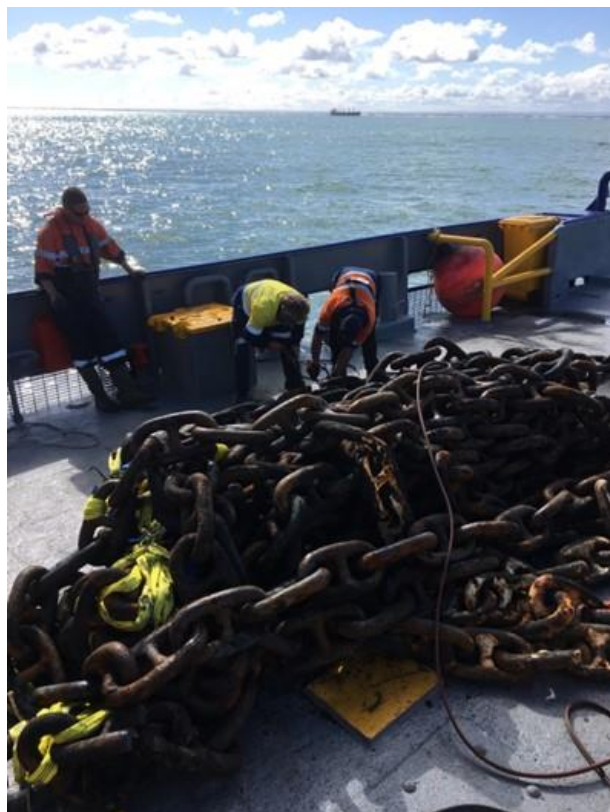
Our team tailors service solutions to suit each client's requirements. We ensure our team is accessible to clients at all times 24/7. We strive to meet budget and requirements in a quick and safe time frame.

Compliance

QMS is fully committed to ensuring the continuous improvement of its Quality, Health, Safety and Environmental Management responsibilities. All QMS personnel are diligent with systems and procedures in place to ensure we meet ISO compliance obligations, which are audited annually with DNV. We hold all necessary insurances, policies and records expected by the Global Offshore Oil Industry, such as OVID compliance. Our ISO certification includes: 9001:2015 – 14001:2015 & 45001:2018, encompassing our integrated Quality, Health, Safety and Environmental management system. Our health and safety systems are in place to ensure the wellbeing and safety of workers, clients, and assets at all times.

Environment

We are dedicated to delivering our services with lowest possible impact on our precious marine environment.



OPERATIONAL CAPABILITIES AND ACCREDITATIONS

MAJOR CLIENTS

Offices

- Broome
- Perth
- Geraldton
- Darwin
- Brisbane

All offices contain storage and boardroom facilities available to clients.

Vessels

QMS has vessels available for charter along the entire Australian Coast, up to Darwin with Ports included, but not limited to Broome, Geraldton, Fremantle, Bunbury, Dampier, Port Hedland, Brisbane, and Darwin.

Accreditations

Company Accreditations Quest Maritime Services is accredited with:



ISO Certified Company DNV accredited



Quest Vessels

All our vessels are IMCA, and OVID audited.



BMT Global

Cambridge Gulf Limited

CGC Group of Companies

CSIRO

Department of Transport

DPIRD (Government Contracts)

Duratek

EGS Survey Pty Ltd

Ertech

Fran Marine

Fremantle Port Authority

INPEX

Midwest Ports (Geraldton)

MLS (Navy Support Canadian and US Navy)

MMA Offshore

Monson Offshore

MPA Fish Farms

Neptune Marine

Polaris Engineering

Precision Hydrographic Surveyors

Shell Australia

Southern Ports (Bunbury, Albany & Esperance)

Transocean

University of Western Australia

Woodside



Department of Transport



THE UNIVERSITY OF WESTERN AUSTRALIA



OPERATIONAL HISTORY

AUSTRALIAN MARINE INSTITUTE OF SCIENCE	Research Scott Reef
BGP	Chase Work - BGP Explorer - Exmouth
BIRDON PTY LTD	Seabed Levelling & Inner Harbour Works / Mooring Installation
BLUE OCEAN MONITORING	Browse Basin Survey
BMT GLOBAL	Survey
BOSKALIS	Interstate Barge Towage
CAMBRIDGE GULF LIMITED	Scientific Research Northern Territory
CGG	Chase Work - Geo Caspian - Dampier
CGC GROUP	Dawesville Channel Dredging,
CSIRO	Scientific Research Kimberley
DARWIN LINE & TUG	Hotshot – Fuel Delivery
DEPARTMENT OF CONSERVATION & LAND MANAGEMENT / DPIRD	Dive Support
DEPARTMENT OF ENVIRONMENT & CONSERVATION	Southwest of WA 3D Survey Mapping
DEPARTMENT OF FISHERIES	Camden Sound Marine Park Habitat Studies
DEPARTMENT OF TRANSPORT	Seabed Levelling Wyndham and Mandurah WA
DURATEC	Seabed Levelling at Garden Island WA
EGS SURVEY PTY LTD	Hydrographic Survey
ERTECH	Seabed Levelling Garden Island WA
FRANMARINE UNDERWATER SERVICES FOR AUSTRALIAN BORDER FORCE	Dive Support, Mooring & Navigation Marker, Install & Maintenance
FREMANTLE PORT AUTHORITY	Wrack Removal / Bathymetric Survey & Debris Removal
FUGRO	Chase Work - Geo Atlantic - Darwin
GARDLINE	Scientific Research Kimberley
HARVEST TECHNOLOGIES	Passenger Transfer
INPEX - ICHTHYS PROJECT DARWIN	Water Quality and Noise Monitoring
KIMBERLEY COAST	Whale Research
KIMBERLEY PORT AUTHORITY / CGL	Seabed levelling Wyndham Harbour WA
M SCIENCE	Scientific Research Kimberley
MIDWEST PORT AUTHORITY	Seabed Levelling Geraldton
MLS	Navy Support Canadian and US Navy
MMA OFFSHORE	Rowley Shoals Mooring Maintenance
MONSON OFFSHORE	'Hot 'shot' to Northern Timor Sea
MPA FISH FARMS	Cone Bay Survey and Barge Tow
NEPTUNE MARINE	PNG support vessel
NT SHIPPING	Various Hot Shots
PACIFIC TUGS	Dead ship tow and decommission
POLARIS ENGINEERING	Tank Delivery Henderson to Dampier
PRECISION HYDROGRAPHIC SURVEYORS	Hydrographic Survey
SCOTT REEF RESEARCH & SCIENTIFIC RESEARCH	Kimberley Region
SHELL AUSTRALIA	Safety Standby & Scientific Research, Pilot Transfer,
SOUTHERN PORTS AUTHORITY	Bed levelling Esperance Albany Bunbury
SVITZER	Seabed Levelling AMC Henderson
UNIVERSITY OF WESTERN AUSTRALIA	Marine Futures URS & Scientific Research Sensitive Reef Areas
WA MUSEUM	Dampier Research Outer Islands
WOODSIDE	Browse Basin Research, Kimberley Coast Research, ROV & Framework, Remote Camps and James Price Point

KEY PERSONNEL

Managing Director / DPA

Shane Male

+61 (0) 427 021 878

QHSE Manager

Kirsty Ludbrook

+61 (0) 409 430 567

Security Management / DPA

Sylvia Male

+61 (0) 498 142 845

Administration / Fleet Support

Peta Andrlich

+61 (0) 433 552 195





CONTACT

QUEST MARITIME SERVICES

Shane Male

☎ 0427 021 878

📍 PO Box 21 BROOME WA 6725

✉ info@questms.com.au 🌐 www.questmaritimeservices.com.au