



“KURI PEARL II” Extended Offshore Charter



Long Range Off-Shore Vessel

Crew and Cargo Transfers

Dive Support

ROV

Seismic Support

Environmental sensitive reef area & near shore surveys

Search and Recovery

High Speed Response

Offshore servicing & provisioning services

Hydrographic Surveys

Wave rider buoy and current metre deployment & recovery

Accommodation Vessel

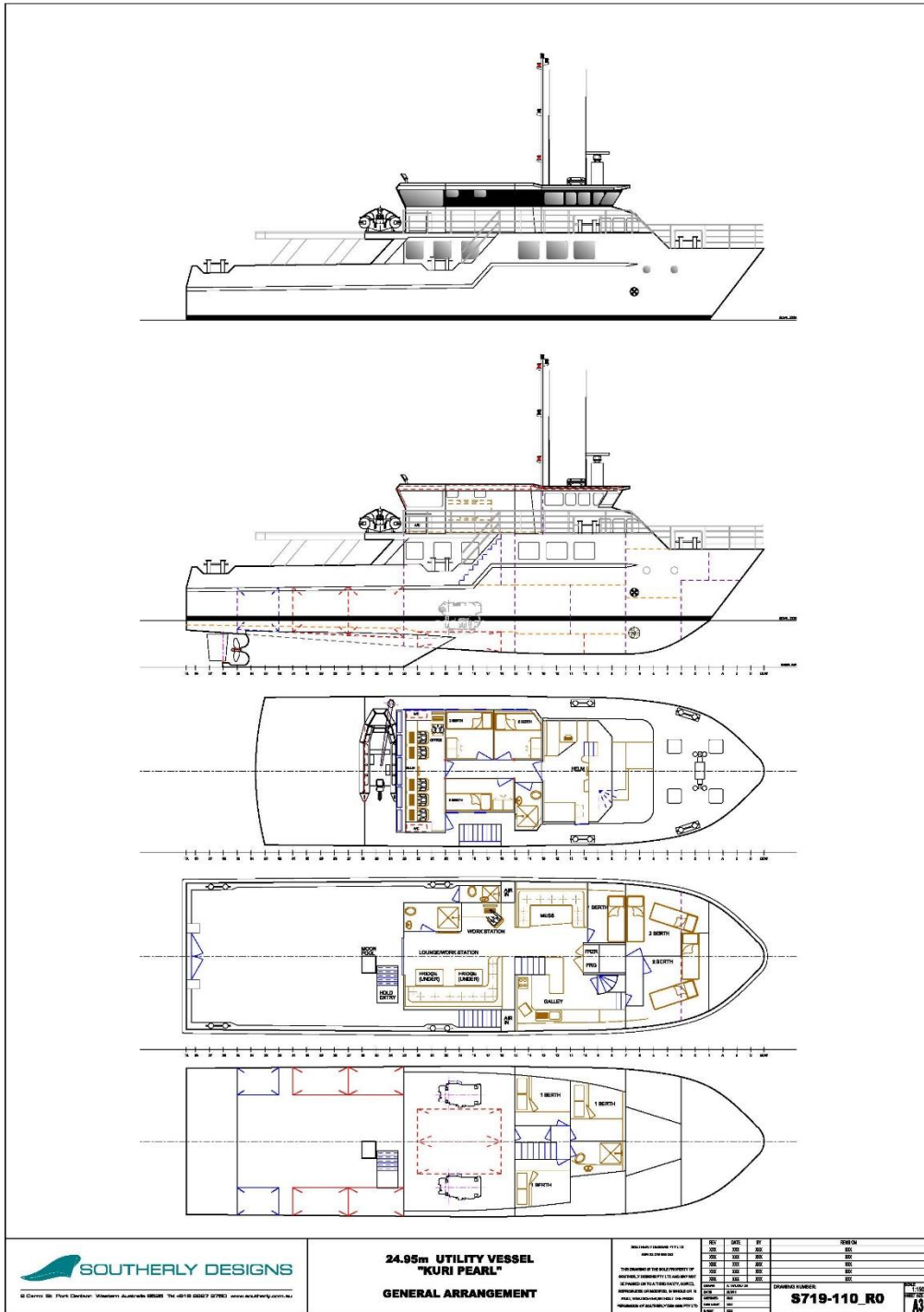
KURI PEARL II

Quest Maritime Services has access to a diverse range of vessels that ensures we are able to cater to our clients requirements.

With excellent accommodation and load carrying ability, the Kuri Pearl II is well suited to survey and marine research vessel, along with a variety of extended offshore charter operations.



YEAR BUILT	1987
LENGTH OVERALL	24.95 M
CLASS	AMSA SURVEY 2B – 16 BERTHED AND 1D FOR 51 UNBERTHED PAX
MOULDED BEAM	6.5 M
DESIGN DRAUGHT	2 M
MAIN ENGINES	2 X CATERPILLAR C18 740HP EACH WITH GYROSCOPIC STABILISER
BOW THRUSTER	KEYPOWER 75HP HYDRAULIC
SPEED & CRUISE	TOP SPEED 16 KNOTS CRUISE 14 KNOTS ECONOMICAL 10 KNOTS @ 100 LPH
GENERATORS	2 X JOHN DEERE 31.3 KVA 3 PHASE 50 HZ STAMFORD ALTERNATORS
CAPACITY	FUEL - 30,000 LITRES FRESH WATER – 2 X 3430L TANKS PLUS 100 LPH DESAL
DAVIT	1 STEELHEAD MARINE WD800 ELECTRIC DAVIT
WINCH / HIAB / A FRAME	AVAILABLE AND CAN BE FITTED UPON REQUEST
TENDER	2 WITH VHF, NAV LIGHTS, GPS, SOUNDER AND SAFETY EQUIPMENT
MOONPOOL	590 X 700MM WTH FRAMES AND SAFETY GUARD
DECK	REMOVABLE HARD TOP CANOPY, BBQ FRIDGE & FREEZER
DIVE PLATFORM	HYDRAULIC 3 PHASE DIVE / TENDER PLATFORM
WORK STATIONS	SEATING AND BENCH SPACE FOR 4 PLUS STANDING ROOM OVERLOOKING DECK
ACCOMMODATION	FULLY AIRCONDITIONED 16 BERTHS WITH 4 TOILETS AND SHOWERS WASHER DRYER COMBO (X2)
GALLEY	FULLY EQUIPPED WITH STOVE, OVEN, MICROWAVE, DISHWASHER FRIDGE & FREEZERS & ICE MAKER. 3 X SATELLITE TV/DVD'S, RADIO AND CD
SAFETY EQUIPMENT	ALL TO AMSA REQUIREMENTS
NAVIGATION	RADAR, SOUNDER, GPS PLOTTERS & C PLOT, AIS, HF, VHF & PORTABLE HAND-HELD RADIOS



CONTACT

Shane Male – 0427 021 878
 7/14 Archer Street Broome WA 6725
 PO Box 21 Broome WA 6725
 www.questmaritimeservices.com.au

